



BEACON

2144 FALLS MANOR

Move-in date: Move-In Ready

Douglas Jorgenson

P: 772.257.1100

C: 561.444.9914

douglasj@ghohomes.com



Bed:2 • Bath: 2 • Living SF: 1,893 • Total SF: 2,612

Open House: 04/25/2026 12:00 PM - 3:00 PM

Now: \$699,900

Welcome to this stunning, turn-key residence where modern elegance meets everyday comfort. Set on an expansive, oversized homesite, this home offers a partial lake view. The Beacon Plan features 2 spacious bedrooms, 2 full baths, and a den that you can easily transform into a quiet library or cozy guest space. Main living areas come thoughtfully designed with a complementing furniture and fixtures package, meaning you can move right in and immediately start enjoying your new lifestyle. The home centers around a bright, open-concept layout that maximizes space and natural light. The coffered ceilings in both the great room and the master suite, add striking architectural depth and sophistication. Carefully curated lighting fixtures in the foyer, kitchen, dining area and great room set the perfect mood, whether you want to host a lively dinner party or enjoy a quiet evening at home. The gourmet kitchen blends top-tier functionality with flawless style. Premium Whirlpool appliance package, sleek quartz countertops and pristine white soft-close cabinets finished with classic crown moulding complete this space. A grey center island provides plenty of prep space and seating, making it the ideal spot to enjoy a quick breakfast or gather with friends. Step outside to experience the generous outdoor space. This beautifully crafted home perfectly balances luxurious design details with an inviting, comfortable ambiance you will love returning to every day.



Included Lighting Package

2144 Falls Manor, Vero Beach, FL, 32967



1x16" Pendant Light

1x16" Pendant Light

1x16" Pendant Light

1x16" Pendant Light



1x16" Ceiling Fan

1x16" Ceiling Fan

1x16" Ceiling Fan

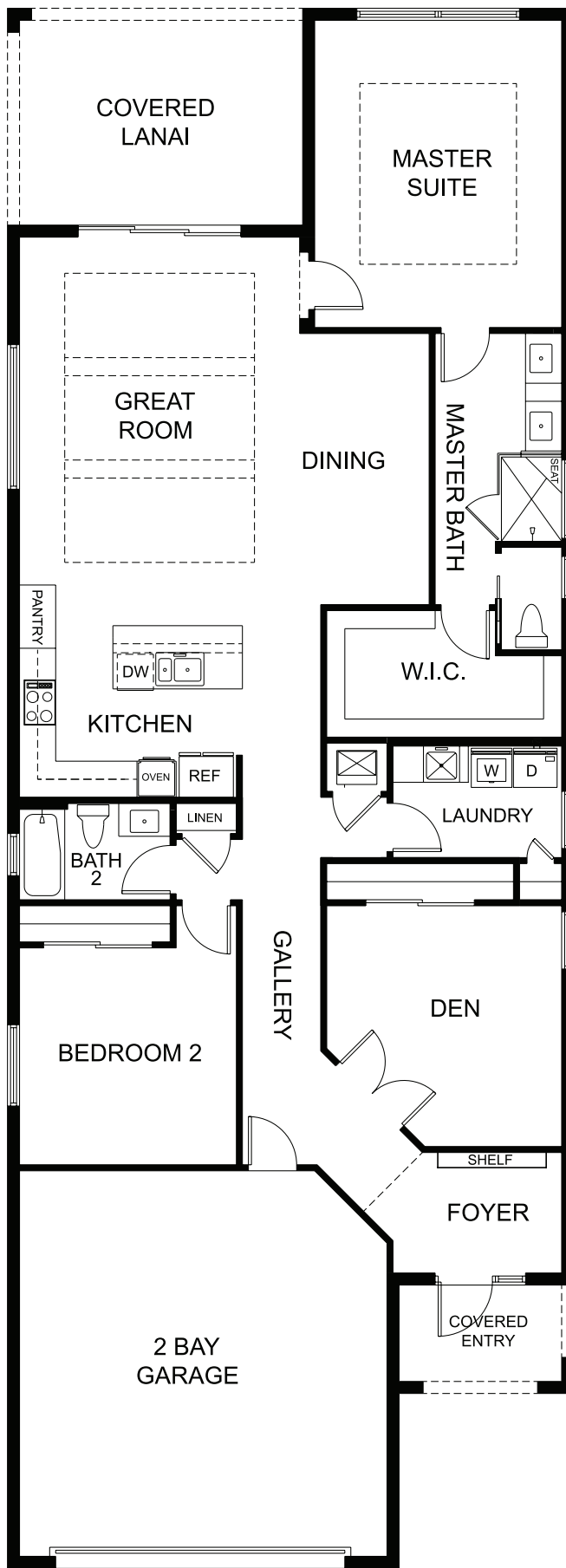
1x16" Ceiling Fan



1x16" Pendant Light

1x16" Pendant Light





BEACON - LOT 91

2 BEDS • DEN • 2 BATHS • 2 BAY GARAGE • 31'-4" x 86'-4" • 2,612 SF
 A/C: 1,893 sf • covered entry: 58 sf • covered patio: 196 sf • garage: 465 sf

GHO HOMES

A GREEN BRICK PARTNER

772.257.1100 • GHOHOMES.COM

All dimensions, features, specifications and square footages are approximate and subject to change without notice. Maps, plans, landscaping and elevation renderings are artist's conceptions, are not to scale, and may not accurately depict the homes or lots as they are built. © GHO Homes 2022. Revised December 8, 2025.

